

Orange County Parks and Recreation
Donations, Partnerships, Sponsorships



Gifts for
Tomorrow



Dear Prospective Donor,



To ensure Orange County continues to provide quality recreation and leisure services to our growing community, it is vital we develop partnerships that help integrate connections.



The Orange County Parks and Recreation Division understands the importance of partnerships between citizens, businesses and private corporations in order to extend shrinking resources.



This catalog is another example of maximizing our resources by appealing to local business, corporations, interested groups and individuals for financial assistance. Together we can provide safe parks for communities within Orange County.



In honor of those contributions, recognition plaques will be placed on or near the items you help provide.

Thank you for bestowing a recreational **Gift for Tomorrow**. Your assistance is greatly appreciated.

Matt Suedmeyer

Matt Suedmeyer

Manager

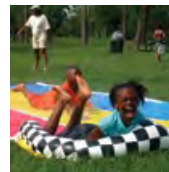
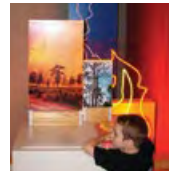
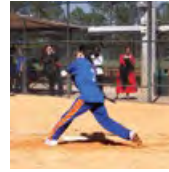
Orange County Parks and Recreation



Table of Contents

Site Amenities & Furniture

Item	Page
Bike Racks, Swings, Park Benches	6
Spring Toys	7
Grills, Picnic Tables, Water Fountains	8
Park Pets	9
Picnic Pavilions	10
Playgrounds	11
Shade Structures	12
Butterfly Gardens, Dog Parks	13
Tree Memorial - Plaques	14
Child Sponsorship Program	15
Corporate Sponsorships	
Platinum	16
Gold	17
Silver	17

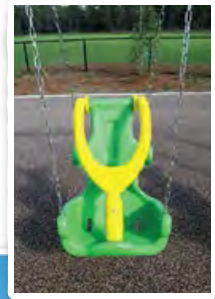




Bike Racks:

Heavy-duty bike racks are a welcome addition to parks with recreation centers or playgrounds. Installed with a concrete pad.

Prices start at \$600



Swings:

New swing set designs add fun to park activities.

Swing set packages include safety surfacing and installation.

Range: \$1,500 - \$3,500

(ADA swings are \$600 each)



Park Benches:

Heavy-duty park benches with contour seating, made of expanded metal with plastic coating, are long lasting and comfortable! Installed on a concrete pad.

Range: \$800 - \$1200

Spring Toys:

What Child wouldn't love to bounce on a bumble bee or fly on a ladybug?

These spring toys would make a welcome addition to any tot-lot.

Price includes installation and site preparation.

Range: \$1,500 - \$2,000





Grills:

Heavy-duty charcoal grills are mounted on steel posts, have adjustable grill levels and are secured to a concrete pad.

Grills come in two sizes - small for family picnics and group for picnic shelters - and can be located adjacent to a picnic shelter or other appropriate areas.

Small: \$600

Group: \$1,000

Picnic Tables:

Made with galvanized steel legs, these are pressure treated and anchored to a concrete pad. Site requires drainage preparation and a concrete pad.

Range: \$600 - \$1,200



Water Fountains:

Man's best friend can enjoy his own drinking fountain with this combo pedestal fountain. Includes steel supports securely anchored on a concrete pad.

Range: \$2,000 - \$4,000

Park Pets:

These delightful pieces of park and garden art are used as a greeter, climb-on pal, or just a friend to hug or hang out with.

The pets can be placed within a playground setting or garden, indoors or outdoors.

Range: \$4,500 - \$6,000



These friendly pets listen indefinitely and never bother anyone!



Picnic Pavilions:



Commemorate a memory with a picnic pavilion or rest stop.

Requires site preparation and concrete foundation. Commemorative plaques are available.

Range: \$20,000 - \$70,000



Playgrounds:

Playgrounds come in many sizes and shapes.

Choices range from adding a climbing wall to providing a complete playground.

We have design staff to help you with any situation.

Range: \$30,000 - \$80,000

This does not include poured-in-place safety surface





Shade Structures:

Keep our children cool and shielded from the Florida sun!

Range:
\$25,000 - \$125,000





Butterfly Gardens:

Watching butterflies has become very popular in our parks. Would you like to provide for a new butterfly garden or the maintenance of an existing one?

New Butterfly Garden: Approximately \$7,000

*Maintenance Cost:
Approximately \$2,500 Annually*



Dog Parks:

Our dog parks have been a tremendous addition to our park system.

Residents are taking their dogs to play in our numerous fenced and gated dog play areas.

Taking care of our dog park amenities and stations has become part of our daily routine.

*New Doggie Station:
Approximately \$300*

*Litter Bag Replacement Cost:
30-Roll Case: approx. \$300*



Tree Memorial with a Plaque:

Citizens wishing to plant trees in Orange County Parks in memory of family members and friends may do so by contacting Orange County Parks and Recreation Administration at 407-836-6200.

Guidelines will be given to you and a written request by the donor will need to be submitted and approved prior to planting.

Memorial Plaques:

Plaques (approx. 8" x 10") furnished by the donor will be placed by the memorial tree.

Approximate Cost for a Memorial Plaque: \$300



Cost for a Memorial Tree:

Range: \$400 - \$700 depending on the species and size of the tree.

Child Sponsorship Program:

Orange County Parks and Recreation has more than 10,000 children involved in recreation programs.

We offer Sports Programs such as:

- Basketball
- Flag football
- Volleyball

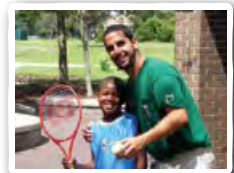
Afterschool and summer camp programs are also immensely popular.

We have many children who would like to participate but need monetary support.

If you would like to sponsor a child within one of our programs, please contact Orange County Parks and Recreation Administration at 407-836-6200.

Here are examples of our program sponsorships:

- Sports League: \$60 per season
- Afterschool Program: \$30 per week
- Summer Camp: \$80 per week



Corporate Sponsorship Levels:

Platinum

\$200,000 Donation

Donors will receive:

- The opportunity to present a check to the Orange County Board of County Commissioners.
- A hand-delivered letter to each of the Orange County commissioners applauding your sponsorship participation.
- An opportunity to have a representative “kick-off” the event or function of your choice.
- Front page recognition through logo placement and feature story on Parks and Recreation website for one year.
- Permanent recognition at one park site.
- Permanent recognition at the Parks Administration building.
- Banner recognition sponsorship on-site for one year.
- Logo prominently displayed on any promotional clothing.
- Logo prominently displayed on any awards.
- Logo prominently displayed on all sponsored program literature.
- The opportunity to have a representative present awards and promotional clothing.
- Recognition plaque.
- On-site display area at event or function of your choice.
- Recognition in all publicity for the sponsored event or program.

Corporate Sponsorship Levels (continued):

Gold

\$100,000 Donation

Donors will receive:

- The opportunity to present a check to the Orange County Board of County Commissioners.
- Opportunity to have a representative “kick-off” the event or function of your choice.
- Permanent recognition at one park site.
- Recognition plaque.
- Front page recognition through logo placement and feature story on Parks and Recreation website for one year.
- Banner recognition sponsorship on-site for one year.
- Logo prominently displayed on any promotional clothing OR awards from the sponsored event/program.
- The opportunity to have a representative present awards and promotional clothing.
- On-site display area at event or function of your choice.
- Recognition in publicity for the sponsored event or program.

Silver

\$50,000 Donation

Donors will receive:

- An opportunity to have representative “kick-off” the event or function of your choice.
- Front page recognition through logo placement and a feature story on Parks and Recreation website for one year.
- Banner recognition sponsorship on-site for duration of event/program.
- Logo prominently displayed on any promotional clothing OR awards from the sponsored event/program.
- The opportunity to have a representative present awards OR promotional clothing.
- VIP parking at event or function of your choice.
- Recognition in all publicity for the sponsored event or program.
- Recognition plaque.

Accreditation Partner: \$5,000 Donation

This is an opportunity to assist the Parks and Recreation Division in obtaining accreditation through the Commission for Accreditation of Park and Recreation Agencies.

This donation benefits the Orange County Parks and Recreation Division and its users for the following reasons:

- Being accredited provides validation of well administered services in accord with approved professional practices.
- Accredited Parks and Recreation agencies benefit the community by ensuring effective and efficient services, creating an environment for citizen engagement, and regular review of operations, policies, and procedures to promote continual improvement.

Accreditation Partners will be recognized in Parks and Recreation accreditation publications, signage and electronic media, to the Board of County Commissioners and at accreditation events with local and state officials, as well as community and business leaders.



Our Mission

We maintain beautiful parks, preserve the environment and provide exceptional recreation for the well-being of our communities.

Our Vision

As a team, we will take pride fulfilling the needs of our community and guests by providing the best parks, trails and recreation.

~

**Orange County Parks and
Recreation Administration
4801 W. Colonial Dr.
Orlando, FL 32808
407-836-6200**

OrangeCountyParks.net



Orange County Government



@OrangeCoParksFL

We embrace the power of diversity. Orange County Parks and Recreation does not discriminate against anyone on the basis of age, race, gender, national origin or disability. ANY SPECIAL NEEDS PLEASE CALL 407-836-6200.